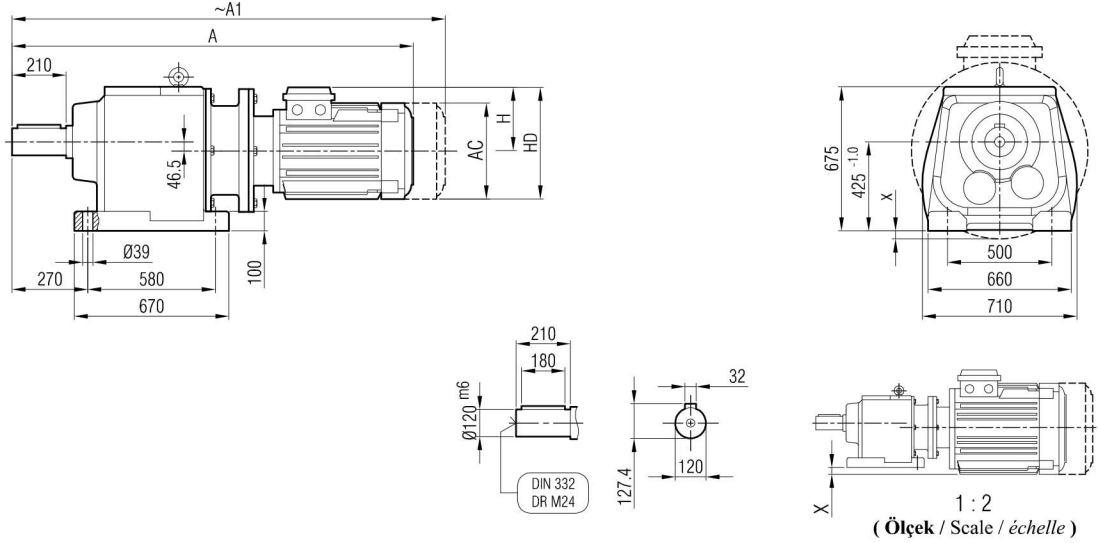
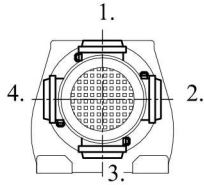




**İRAPM 152**  
**İRAPM 153**



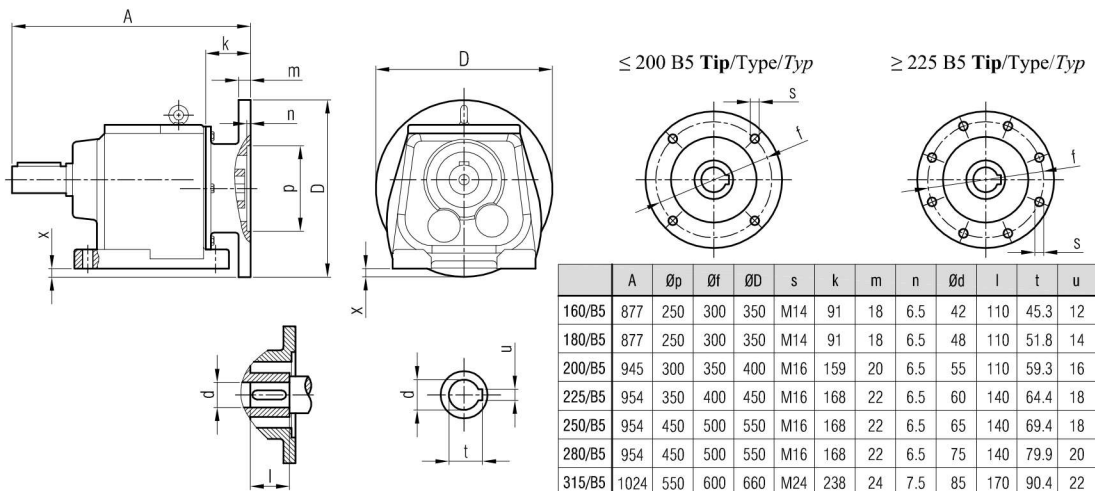
**Klemens Pozisyonları**  
Terminal Box Positions  
Klemmenkasten Positionen



	160 M/B5	160 L/B5	180 M/B5	180 L/B5	200/B5	225 S/B5	225 M/B5	250/B5	280 S/B5	280 M/B5	315 S/B5	315 M/B5
A	1367	1411	1424	1462	1582	1609	1634	1710	1772	1772	2004	2004
A1	1482	1526	1544	1582	1702	1729	1754	1830	1892	1972	2204	2204
H	220	220	241	241	241	285	285	322	350	350	510	510
HD	380	380	421	421	421	510	510	572	630	630	825	825
AC	310	310	348	348	348	434	434	480	544	544	614	614
x	-	-	-	-	-	-	-	-	-	-	-	-

"A1" Ölçüsü Frenli Motorlar içindir.  
Dimension "A1" is for motors with brake  
Le dimensions "A1" correspondent aux moteurs équipés de freins.

**İRAP 152**  
**İRAP 153**



	A	Øp	Øf	ØD	s	k	m	n	Ød	l	t	u	x
160/B5	877	250	300	350	M14	91	18	6.5	42	110	45.3	12	-
180/B5	877	250	300	350	M14	91	18	6.5	48	110	51.8	14	-
200/B5	945	300	350	400	M16	159	20	6.5	55	110	59.3	16	-
225/B5	954	350	400	450	M16	168	22	6.5	60	140	64.4	18	-
250/B5	954	450	500	550	M16	168	22	6.5	65	140	69.4	18	-
280/B5	954	450	500	550	M16	168	22	6.5	75	140	79.9	20	-
315/B5	1024	550	600	660	M24	238	24	7.5	85	170	90.4	22	-