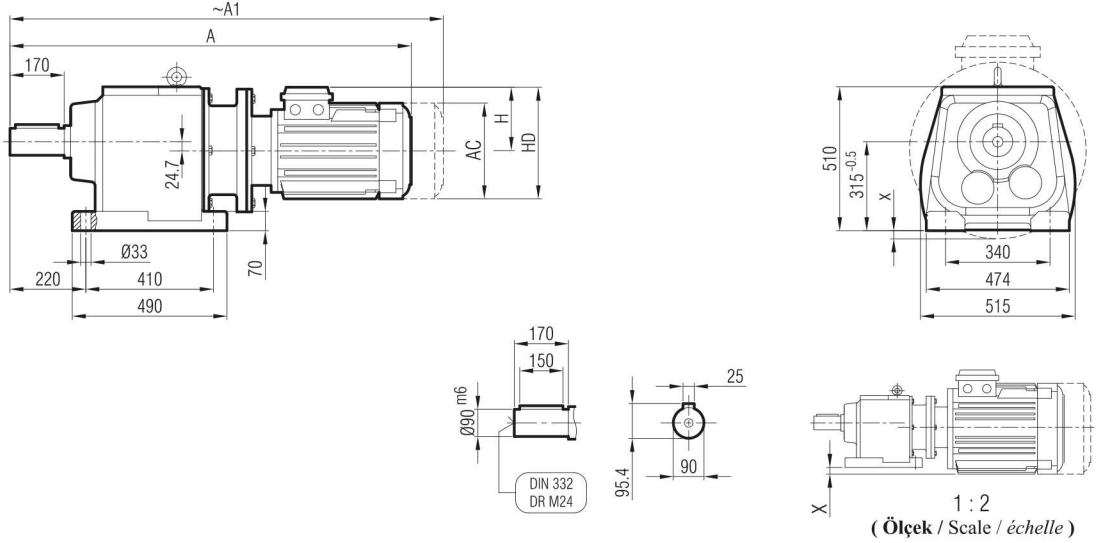
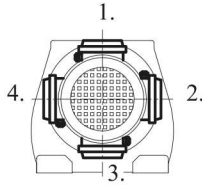




İRAPM 122
İRAPM 123



Klemens Pozisyonları
Terminal Box Positions
Klemmenkasten Positionen



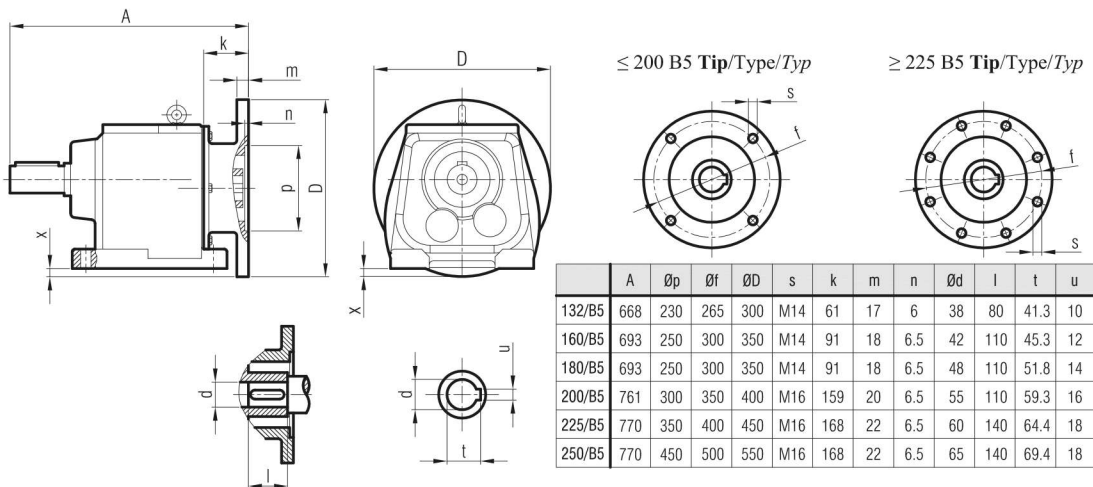
	132 S/B5	132 M/B5	160 M/B5	160 L/B5	180 M/B5	180 L/B5	200/B5	225 S/B5	225 M/B5	250/B5
A	1048	1086	1183	1227	1240	1278	1398	1425	1450	1526
A ₁	1148	1186	1298	1342	1360	1398	1518	1545	1570	1646
H	168	168	220	220	241	241	241	285	285	322
HD	300	300	380	380	421	421	421	510	510	572
AC	257	257	310	310	348	348	348	434	434	480
x	-	-	-	-	-	-	-	-	-	-

"A₁" Ölçüsü Frenli Motorlar içindir.

Dimension "A₁" is for motors with brake

Le dimensions "A₁" correspondent aux moteurs équipés de freins.

İRAP 122
İRAP 123



	A	Øp	Øf	ØD	s	k	m	n	Ød	l	t	u	x
132/B5	668	230	265	300	M14	61	17	6	38	80	41.3	10	-
160/B5	693	250	300	350	M14	91	18	6.5	42	110	45.3	12	-
180/B5	693	250	300	350	M14	91	18	6.5	48	110	51.8	14	-
200/B5	761	300	350	400	M16	159	20	6.5	55	110	59.3	16	-
225/B5	770	350	400	450	M16	168	22	6.5	60	140	64.4	18	-
250/B5	770	450	500	550	M16	168	22	6.5	65	140	69.4	18	-

contact:

Mob:00201022621584/00201092425789

Email:info@andalos-trading.com

website:www.andalos-trading.com

Egypt-Giza-of October City
Lelat Alqader-Almaged Center