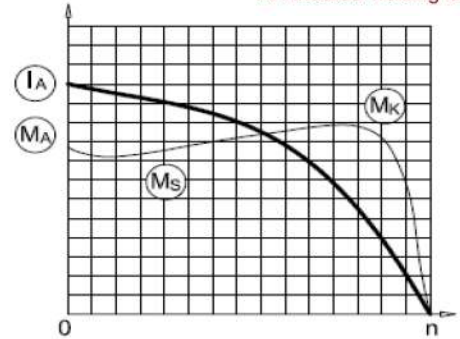


# GM 200 L 6b



3-Phase 400 V (Δ) 50 Hz  
 Duty Type : S1  
 Degree of protection : IP 55 ( TEFC )  
 Insulation class : F ( 155 °C )  
 Temp rise : Class B ( 80K )  
 Mounting Design : B3



## ELECTRICAL DESIGN

### Direct On Line

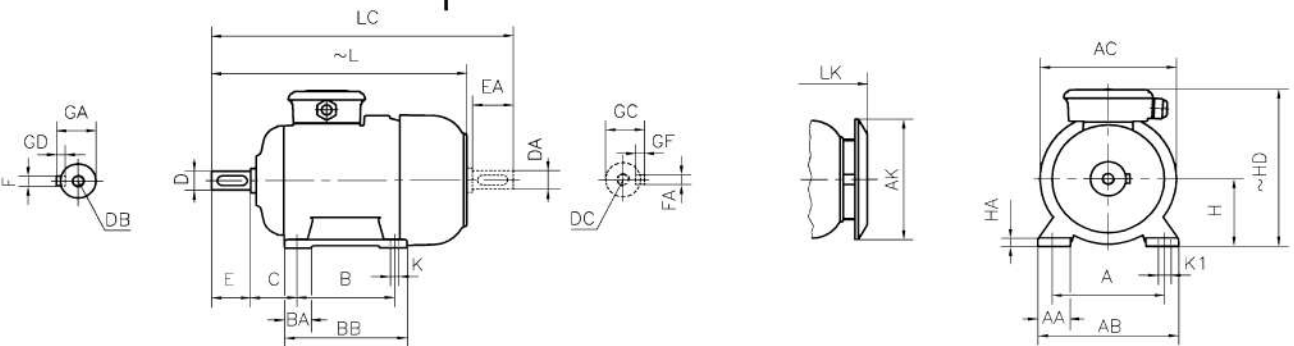
Rated output (kW) : 22	Locked rotor Current – Ia (A) : 301
	Ia / In : 7.0
Speed (rpm) : 970	Locked rotor Torque – Ma (Nm) : 541
	Ma / Mn : 2.5
Rated current (A) : 43	
<b>Y / Δ Starting</b>	
Torque – Mn (Nm) : 216.5	Locked rotor Current – Ia (A) : 99
	Ia / In : 2.3
Cos φ : 0.81	Locked rotor Torque – Ma (Nm) : 173
	Ma / Mn : 0.8
Efficiency % : 91.1    91.1    88.4	Breakdown Torque – Mk (Nm) : 650
	Mk / Mn : 3.0
Moment of inertia J (kgm) <sup>2</sup> : 0.26	

## MECHANICAL DESIGN

### Bearing Arrangement

Frame : Cast Iron  
 End shields : Cast Iron  
 Cooling fan : Plastic  
 Terminal box : Aluminium  
 Cable gland : Pg 36  
 No of cable glands : 2

	Drive End	Non Drive End
Standard design	6312 ZZ C3	6212 ZZ C3
Reinforced design	NU 312 E	6312 C3
Noise Level (dB-A) : 61		
Paint : RAL 7031- Grey		
Approximate weight (kg) : 222		



### DIMENSIONS

Dimensions of foot mounted motors for mounting arrangement : B3, B6, B7, B8, B15, V5, V6																												
H	HD	HA	A	AA	AB	ØAC	ØAK	K	K1	B	B'	BA	BA'	BB	L	LC	LK	C	E	EA	DB	DC	ØD	ØDA	GA	FxGD	FAXGF	
200	477	26	318	80	398	390	370	19	-	305	-	68	-	355	747	865	803	133	110	M20	55	59	16X10					

\* Efficiencies are calculated according to indirect method where the additional load losses are determined from exact measurements at different load points.