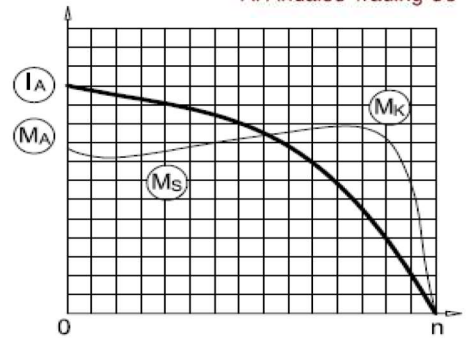


# AGM90 L 4



3-Phase 230/400 V 50 Hz

- Duty Type : S1
- Degree of protection : IP 55 ( TEFC )
- Insulation class : F ( 155 °C )
- Temp rise : Class B ( 80K )
- Mounting Design : B3



## ELECTRICAL DESIGN

### Direct On Line

Rated output (kW) : 1.5	Locked rotor Current – Ia (A) : 21
	Ia / In : 6.5
Speed (rpm) : 1440	Locked rotor Torque – Ma (Nm) : 36
	Ma / Mn : 3.6
Rated current (A) : 3.3	
<b>Y / Δ Starting</b>	
Torque – Mn (Nm) : 9.95	Locked rotor Current – Ia (A) : -
	Ia / In : -
Cos φ : 0.77	Locked rotor Torque – Ma (Nm) : -
	Ma / Mn : -
Efficiency % : 85.3    85.3    84	

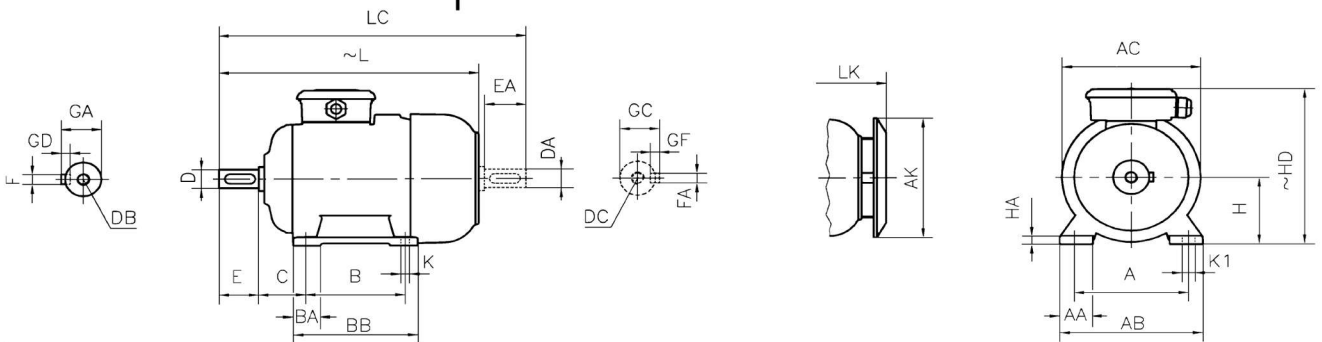
Moment of inertia J (kgm) <sup>2</sup> : 0.0033	Breakdown Torque – Mk (Nm) : 37
	Mk / Mn : 3.7

## MECHANICAL DESIGN

- Frame : Aluminium
- End shields : Aluminium
- Cooling fan : Plastic
- Terminal box : Plastic
- Cable gland : Pg 16
- No of cable glands : 1

### Bearing Arrangement

	Drive End	Non Drive End
Standard design	6205 ZZ	6205 ZZ
Reinforced design	-	-
Noise Level (dB-A) : 46		
Paint : RAL 7031- Grey		
Approximate weight (kg) : 17		



### DIMENSIONS

Dimensions of foot mounted motors for mounting arrangement : B3, B6, B7, B8, B15, V5, V6

H	HD ~	HA	A	AA	AB	ØAC	ØAK	K	K1	B	B'	BA	BA'	BB	L ~	LC	LK ~	C	E EA	DB DC	ØD ØDA	GA GC	FxGD FAXGF
90	216	12	140	43	180	176	151	10	15	125	-	35	-	155	334	389	363	56	50	M8	24	27	8X7

\* Efficiencies are calculated according to indirect method where the additional load losses are determined from exact measurements at different load points.

contact:

Mob:00201022621584/00201092425789

Email:info@andalos-trading.com

website:www.andalos-trading.com

Egypt-Giza-of October City

Lelat Alqader-Almaged Center