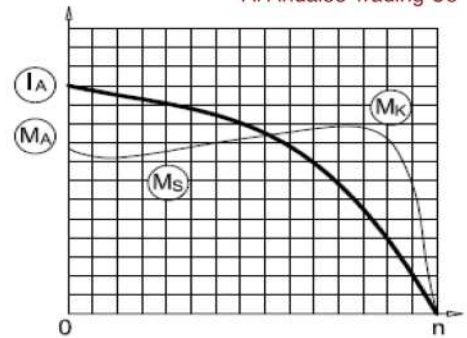


AGM 63 4b



3-Phase 230/400 V 50 Hz

- Duty Type : S1
- Degree of protection : IP 55 (TEFC)
- Insulation class : F (155 °C)
- Temp rise : Class B (80K)
- Mounting Design : B3



ELECTRICAL DESIGN

Direct On Line

- Rated output (kW) : 0.18
- Speed (rpm) : 1340
- Rated current (A) : 0.6
- Torque – Mn (Nm) : 1.28
- Cos φ : 0.73
- Efficiency % : 59.7 (4/4), 59.7 (3/4), 55.8 (1/2)
- Moment of inertia J (kgm)² : 0.00021

- Locked rotor Current – Ia (A) : 2
- Ia / In : 2.9
- Locked rotor Torque – Ma (Nm) : 3
- Ma / Mn : 2.0

Y / Δ Starting

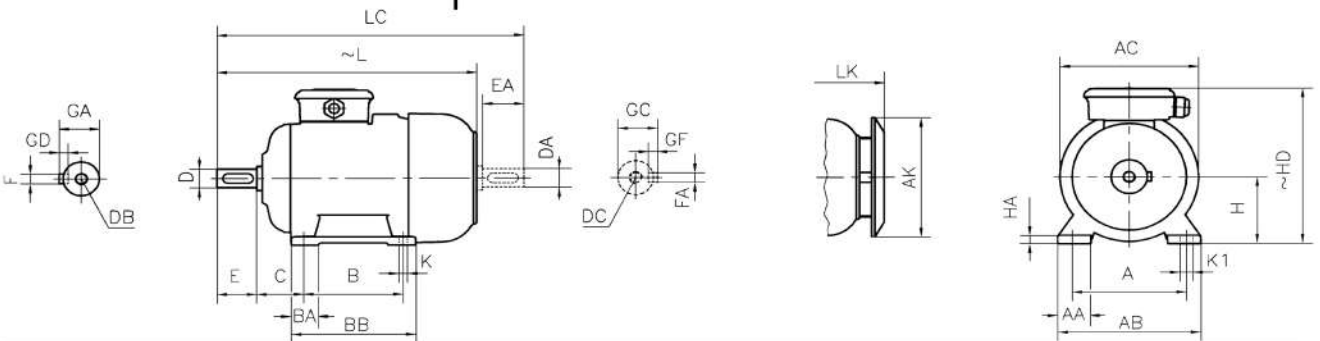
- Locked rotor Current – Ia (A) : -
- Ia / In : -
- Locked rotor Torque – Ma (Nm) : -
- Ma / Mn : -
- Breakdown Torque – Mk (Nm) : 3
- Mk / Mn : 2.0

MECHANICAL DESIGN

- Frame : Aluminium
- End shields : Aluminium
- Cooling fan : Plastic
- Terminal box : Plastic
- Cable gland : Pg 11
- No of cable glands : 1

Bearing Arrangement

	Drive End	Non Drive End
Standard design	6201 ZZ	6201 ZZ
Reinforced design	-	-
Noise Level (dB-A)	: 43	
Paint	: RAL 7031- Grey	
Approximate weight (kg)	: 3.9	



DIMENSIONS

Dimensions of foot mounted motors for mounting arrangement : B3, B6, B7, B8, B15, V5, V6

H	HD	HA	A	AA	AB	ØAC	ØAK	K	K1	B	B'	BA	BA'	BB	L	LC	LK	C	E	EA	DB	DC	ØDA	GA	GC	FxGD	FAXGF
63	160	10	100	31	125	121	116	7	11	80	-	27	-	103	216	243	245	40	23	M4	M4	11	12.5	12.5	4X4	4X4	

* Efficiencies are calculated according to indirect method where the additional load losses are determined from exact measurements at different load points.

contact:

Mob:00201022621584/00201092425789

Email:info@andalos-trading.com

website:www.andalos-trading.com

Egypt-Giza-of October City

Lelat Alqader-Almaged Center