

## AGM 63 4a

3-Phase 230/400 V 50 Hz

Duty Type : S1  
Degree of protection : IP 55 ( TEFC )  
Insulation class : F ( 155 °C )  
Temp rise : Class B ( 80K )  
Mounting Design : B3

### ELECTRICAL DESIGN

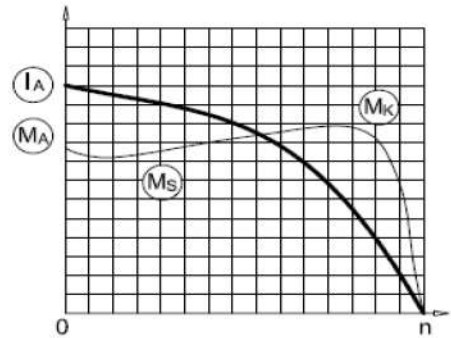
Rated output (kW) : 0.12  
Speed (rpm) : 1365  
Rated current (A) : 0.41  
Torque – Mn (Nm) : 0.84  
Cos φ : 0.74  
Efficiency % : 57.1    57.1    53.3  
Moment of inertia J (kgm)<sup>2</sup> : 0.00017

### Direct On Line

Locked rotor Current – Ia (A) : 1  
Ia / In : 3.1  
Locked rotor Torque – Ma (Nm) : 2  
Ma / Mn : 2.0

### Y / Δ Starting

Locked rotor Current – Ia (A) : -  
Ia / In : -  
Locked rotor Torque – Ma (Nm) : -  
Ma / Mn : -  
Breakdown Torque – Mk (Nm) : 2  
Mk / Mn : 2.2

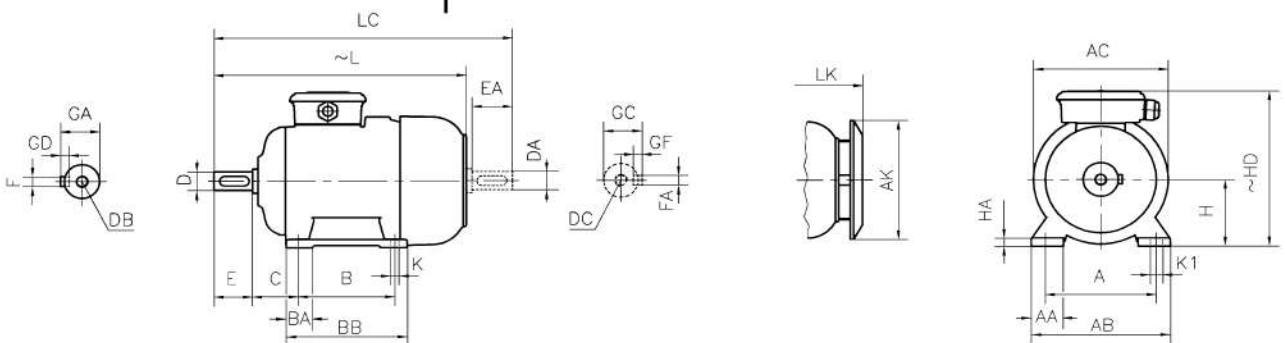


### MECHANICAL DESIGN

Frame : Aluminium  
End shields : Aluminium  
Cooling fan : Plastic  
Terminal box : Plastic  
Cable gland : Pg 11  
No of cable glands : 1

### Bearing Arrangement

	Drive End	Non Drive End
Standard design	6201 ZZ	6201 ZZ
Reinforced design	-	-
Noise Level (dB-A)	: 43	
Paint	: RAL 7031- Grey	
Approximate weight (kg)	: 3.4	



### DIMENSIONS

Dimensions of foot mounted motors for mounting arrangement : B3, B6, B7, B8, B15, V5, V6

H	HD	HA	A	AA	AB	ØAC	ØAK	K	K1	B	B'	BA	BA'	BB	L	LC	LK	C	E	DB	ØD	GA	FxGD
63	160	10	100	31	125	121	116	7	11	80	-	27	-	103	216	243	245	40	23	M4	11	12.5	4X4

\* Efficiencies are calculated according to indirect method where the additional load losses are determined from exact measurements at different load points.

contact:

Mob:00201022621584/00201092425789

Email:andaloseg@gmail.com

website:www.andalus-trading.com

Egypt-Giza-of October City

Lelat Alqader-Almaged Center